



FAMOUS NAMES LLC

THE NEXT GENERATION OF
AWARD-WINNING NAIL PRODUCTS

THE IBX[®] SYSTEM

Before You Start

As you would with any new service, please ask your client if he or she has ever had any sensitivities, allergies, or adverse reactions from a nail product. If yes, do not apply **IBX**. If any part of the nail bed is exposed, do not apply **IBX**.

When applying **IBX** or **IBX REPAIR**, always work in such a manner that you avoid all contact with the skin in order to avoid potential adverse skin reactions. If redness, itching or rash occurs during or after application, discontinue use immediately.

Applying the **IBX SYSTEM** requires a heat source. The target temperature is 105 - 110F or slightly warmer than a Jacuzzi.

We recommend one of these three options:

1. A basic table lamp with a 75-100 watt bulb, held 6-8 inches away
2. A nail polish dryer, set to warm
3. A small blow dryer set to low heat and low speed, held 16-18 inches away

After you penetrate the product into the upper layers of the nail plate with gentle heat, the **IBX SYSTEM** will require curing with either an LED or UV style lamp. Cure time should be based on the manufacturer's suggested cure time for their gel polish color coat.

IBX REPAIR SHOULD NEVER BE USED ALONE, IT MUST BE USED IN COMBINATION WITH IBX.

WE
RECOMMEND

view our How-To video at
IBXnails.com





FAMOUS NAMES LLC
THE NEXT GENERATION OF
AWARD-WINNING NAIL PRODUCTS

IBX® FOR NATURAL NAILS

FIRST APPLICATION

Always start with a clean bare nail that has been filed and shaped.

Cleanse with your preferred cleanser.

▶ **Assess the nails to see if there are any damaged areas that need IBX REPAIR. If not, proceed directly to the IBX application.**

1. **APPLY IBX REPAIR** to areas with splitting, peeling and delamination. Watch as **IBX REPAIR** seeps into the gaps and splits, filling them in.
2. **HEAT** Gentle heat for **1** minute (you may use a nail polish dryer set to warm; a table lamp with a 75-100 watt bulb; or a small blow dryer set to low heat and speed).
3. **BLOT** Lightly blot the excess from the surface if needed.
4. **CURE** With an LED or UV Lamp for the same amount of time your lamp cures your Gel Polish color coat.
5. **CLEANSE** With your preferred cleanser.

▶ **Now it's time for IBX.**
When doing a client's first **IBX** treatment, you will need to apply **IBX TWICE**.

1. **APPLY** Gently shake **IBX** and apply a thin layer over the nail plate.
2. **HEAT** Gentle heat for **4** minutes (you may use a nail polish dryer set to warm; a table lamp with a 75-100 watt bulb; or a small blow dryer set to low heat and speed).
3. **BLOT** Lightly blot the excess from the surface if needed.
4. **CURE** With an LED or UV Lamp for the same amount of time your lamp cures your Gel Polish color coat.
5. **CLEANSE** With your preferred cleanser.

▶ **Now we'll repeat those five steps for a second application of IBX.**

1. **APPLY** Gently shake **IBX** and apply a thin layer over the nail plate.
2. **HEAT** Gentle heat for **2** minutes (you're totally a pro at this by now!).
3. **BLOT** Lightly blot the excess from the surface if needed.
4. **CURE** With an LED or UV Lamp for the same amount of time your lamp cures your Gel Polish color coat.
5. **CLEANSE** With your preferred cleanser.

Now you're ready to do your manicure, just as you normally would. **IBX** does not replace your polish base coat!

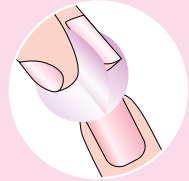
IBX FAST TRACK



1. APPLY THINLY



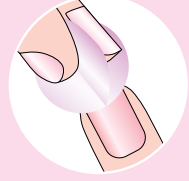
2. HEAT



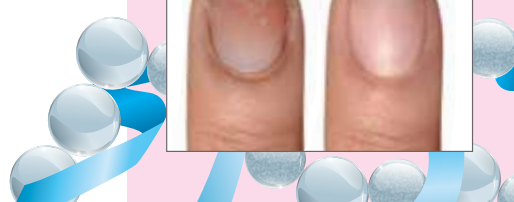
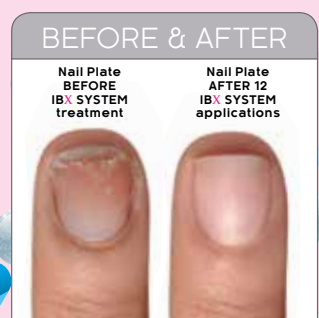
3. BLOT



4. CURE



5. CLEANSE





FAMOUS NAMES LLC
THE NEXT GENERATION OF
AWARD-WINNING NAIL PRODUCTS

IBX® FOR NATURAL NAILS

ONGOING APPLICATION

For Ongoing IBX Treatments, follow the same instructions for **IBX REPAIR**.

Apply only one application of **IBX** during each follow-up appointment. You only have to use your heat source for 2 minutes!

▶ Always follow the 5 simple steps.

1. **APPLY** Gently shake **IBX** and apply a thin layer over the nail plate.
2. **HEAT** Gentle heat for 2 minutes.
3. **BLOT** Lightly blot the excess from the surface if needed.
4. **CURE** With an LED or UV Lamp for the same amount of time your lamp cures your Gel Polish color coat.
5. **CLEANSE** With your preferred cleanser.

IBX FAST TRACK



1. APPLY THINLY



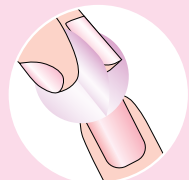
2. HEAT



3. BLOT



4. CURE



5. CLEANSE

BEFORE & AFTER

