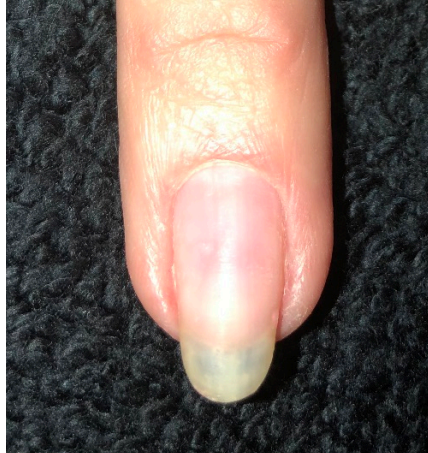


# 3

## Application of IBX BOOST



## IBX BOOST NATURAL NAIL RE-BALANCE INSTRUCTIONS

Do a dry manicure so the cuticle is cleaned up and off the nail plate.

- 1 Lightly blend the contact area of the existing IBX BOOST to the new growth area.
- 2 Cleanse the new growth area with Cinnatize.
- 3 If needed, do your IBX treatment to the new nail growth area.
- 4 Apply a **THIN** layer of IBX BOOST BASE to the new growth area.
- 5 Cure in a UV or LED lamp for one minute.
- 6 Apply a thin coat of IBX BOOST to the new growth area allowing it to self-level and then glide the product over the entire nail.
- 7 Cure in a UV or LED lamp for one minute.
- 8 For damaged, severe nails or to build additional thickness, we recommend a **THIN** second coat of IBX BOOST. Apply the second coat of IBX BOOST as in #4 and cure as in #5. Do not cleanse before applying this coat.
- 9 Cleanse with with 90% or higher IPA to remove inhibition layer and shape to desired look. Avoid thinning IBX BOOST while filing.
- 10 Your natural nails are now ready to go!

